

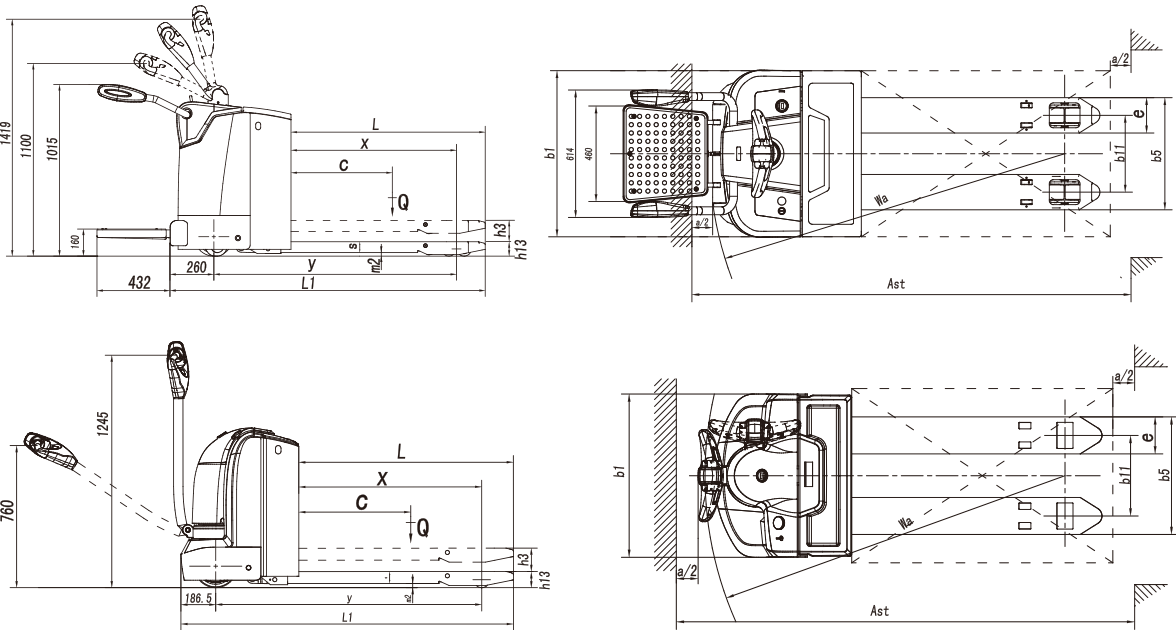
A Series Pallet Truck Hi Range

Distinguishing mark	1.1	Manufacturer		HANGCHA GROUP CO.,LTD.			
	1.2	Manufacturer's type designation		CBD20-AC1S CBD30-AZ3S	CBD20-AC1	CBD30-AC1S CBD30-AZ3S	CBD30-AC1
	1.4	Operator type: hand, pedestrian, standing, seated, order-picker		Standing	Pedestrian	Standing	Pedestrian
	1.5	Rated capacity/rated load	Q (kg)/(lb)	2000/4409	2000/4409	3000/6614	3000/6614
	1.6	Load centre distance	c (mm/in)	600/23.6	600/23.6	600/23.6	600/23.6
	1.9	Wheelbase	y (mm/in)	1369/53.9 ¹⁾	1357/53.4 ¹⁾	1369/53.9 ¹⁾	1357/53.4 ¹⁾
Weight	2.1	Service Weight	kg/lb	726/1600	544/1199	750/1654	564/1243
Tyres, chassis	3.1	Tyres: solid rubber, superelastic, pneumatic, polyurethane		PU	PU	PU	PU
	3.2	Tyre size, front	mm/in	Φ230x75/Φ9.1x3.0	Φ230x75/Φ9.1x3.0	Φ230x75/Φ9.1x3.0	Φ230x75/Φ9.1x3.0
	3.3	Tyre size, rear	mm/in	Φ85x70/Φ3.3x2.8	Φ85x70/Φ3.3x2.8	Φ85x70/Φ3.3x2.8	Φ85x70/Φ3.3x2.8
	3.4	Additional wheel (dimensions)	mm/in	Φ125x50/Φ4.9x2.0	Φ100x40/Φ3.9x1.6	Φ125x50/Φ4.9x2.0	Φ100x40/Φ3.9x1.6
	3.5	Wheels, number front / rear (x = driven wheels)		1x+2/4	1x+2/4	1x+2/4	1x+2/4
	3.6	Tread, front	b10 (mm/in)	575/22.6	480/18.9	575/22.6	480/18.9
	3.7	Tread, rear	b11 (mm/in)	370/14.6	370/14.6	370/14.6	370/14.6
Dimensions	4.4	Lift	h3 (mm/in)	125/4.9	125/4.9	125/4.9	125/4.9
	4.15	Fork height,lowered	h13 (mm/in)	85/3.35	85/3.35	85/3.35	85/3.35
	4.19	Overall length	l1 (mm/in)	1867/73.5	1781/70.1	1867/73.5	1781/70.1
		Overall length(unfold the pedal)	l1 (mm/in)	2299/90.5		2299/90.5	
	4.21	Overall width	b1 (mm/in)	800/31.5	750/29.5	800/31.5	750/29.5
	4.22	Fork dimensions ISO 2331	s/e/l mm/in)	64/170/1150 (2.5/6.7/45.2)	64/170/1150 (2.5/6.7/45.2)	64/170/1150 (2.5/6.7/45.2)	64/170/1150 (2.5/6.7/45.2)
	4.25	Distance between fork-arms	b5 mm/in)	540/680 (21.3/26.8)	540/680 (21.3/26.8)	540/680 (21.3/26.8)	540/680 (21.3/26.8)
	4.32	Ground clearance,center of wheelbase	m2 (mm/in)	25/0.98	25/0.98	25/0.98	25/0.98
	4.34.1	Aisle width for pallets 1000 x 1200 crossways	Ast (mm/in)	1997/78.6 ²⁾	1955/77 ²⁾	1997/78.6 ²⁾	1955/77 ²⁾
	4.34.2	Aisle width for pallets 800 x 1200 lengthways	Ast (mm/in)	2047/80.6 ²⁾	2005/78.9 ²⁾	2047/80.6 ²⁾	2005/78.9 ²⁾
	4.35	Turning radius	Wa mm/in)	1627/2040 ¹⁾ (64.1/80.3)	1585 ¹⁾ (62.4)	1627/2040 ¹⁾ (64.1/80.3)	1585 ¹⁾ (62.4)
Performance data	5.1	Travel speed,laden/unladen	km/h(mph)	9.0/9.5 (5.6/5.9)	6.0/6.0(3.7/3.7)	7.5/9.5(4.7/5.9)	5.0/6.0(3.1/3.7)
	5.2	Lift speed,laden/unladen	m/s (ft/min)	0.047/0.065 (9.3/12.8)	0.047/0.065 (9.3/12.8)	0.036/0.051 (7.1/10.0)	0.036/0.051 (7.1/10.0)
	5.3	Lowering speed,laden/unladen	m/s (ft/min)	0.075/0.070 (14.8/13.8)	0.073/0.070 (14.4/13.8)	0.060/0.055 (11.8/10.8)	0.060/0.055 (11.8/10.8)
	5.8	Max.Gradeability,laden/unladen	%	10/16	8/20	8/16	6/20
Electric engine	6.1	Drive motor rating S2 60 min	kW/hp	2.2/3.0	1.5/2.0	2.2/3.0	1.5/2.0
	6.2	Lift motor rating at S3 15%	kW/hp	2.2/3.0	2.2/3.0	2.2/3.0	2.2/3.0
	6.4	Battery voltage,rated capacity (Lead-acid)	V/Ah	24/240	24/210	24/280	24/240
		Battery voltage,rated capacity,Optional	V/Ah	~24/340	~24/240	~24/340	~24/240
	8.1	Type of drive control		AC	AC	AC	AC
	9.1	Manufacturer		CURTIS/ZAPI	CURTIS	CURTIS/ZAPI	CURTIS

Note: 1). When fork lowered,+68mm/+2.68in, 2). When fork lowered,+40mm/+1.57in

Li-Ion Battery Specification

Type		CBD20-AC1S-I	CBD30-AC1S-I
Li-Ion battery	V/Ah	24/150	24/150
Li-Ion battery,Optional	V/Ah	24/200	24/200



A Series Pallet Truck Hi Range

with capacities of 2,000 to 3,000kg



Li-Ion Technology

- / The power supply is lithium iron phosphate battery. Each cell is provided with the safety protection device, and is safe and reliable.
- / With advanced BMS power supply management system, intercommunication between the lithium battery and vehicle controller can be realized in order to conduct real-time monitoring for the battery status. The service life and safety of the battery can be effectively improved.
- / With high multiplying power discharge technology, the forklift still can output strong power at the end of battery discharge period.
- / Charging and discharge efficiency are higher, the forklift can have longer endurance mileage, the battery is energy-saving and environment-friendly.
- / With fast charging technology, the lithium battery can be fully charged within 2h.
- / The lithium battery pack adopts the fully-enclosed structure, and is safe and reliable.
- / The battery is maintenance-free, does not result in heavy-metal pollution, and is green and environment-friendly.



**5 YEARS
WARRANTY**



High Performance

- / AC travelling motor applied to provide excellent acceleration, good gradeability, low heat, no carbon brush and maintenance free.
- / The latest CURTIS AC control system provides accurate and stable control to work more efficient.
- / The applied CAN-BUS structure to offer more reliable and faster command access.
- / Regenerative brake and slope anti-slide function are offered by this truck.
- / Stand-on type with high power drive motor, provides fast travel speed and good gradeability.

Reliability

- / Five-pivot with low centre of gravity design and high strength steel frame structure chassis provide larger residual load capacity and longer working life.
- / Water-proof plugs and connectors applied to provide a reliable protection to electric system.
- / The adopted unique floating suspension system ensures good driving wheels grip and excellent.
- / Top quality hydraulic power unit applied to provide low noise, low vibration, smooth lifting and landing reliable operation.
- / Punch-formed forks to provide more strength and tip guide to provide higher efficient operation.
- / H-type mast profile section to provide more stable and rigid performance.
- / The power plug is fixed on the truck body to avoid damage from battery installment.
- / Pedestrian type use the new design drive system, the drive motor will not accompany the tiller rotation, it can keep all the cable connect to the drive motor avoid being bent.
- / Using non-contact proximity switch, it can provides long life and reliable operation.

Safety

- / With three braking types: releasing brake, reversing brake and emergency brake, the driving safety has been ensured.
- / The applied slope anti-slip function ensures the safety of the operation.
- / The emergency button on the tiller head can effectively avoid the harm to the driver.
- / Lifting limitation switch to offer protection to the loads from damaging.
- / Turning speed is automatically reduced when steering only for stand-on.
- / Turtle speed function can keep the slow move when the tiller is vertical direction, the truck can stack goods even in narrow space.

Maintenance

- / AC motor with no cabin brush, don't need maintenance, lower cost.
- / Rear cover can be completely open, operator can see all the components, so the maintenance is very convenient.
- / All shafts installed lubricated shaft sleeve and oil cup, provide convenient maintenance and long service life.

Comfort

- / The shock absorption design of foldable platform improves comfort greatly to the operator.
- / The new designed floating suspension driving system, adjustable automatically with loads, offers the driving wheels sufficient power.
- / Simple and beautiful tiller designed to operate all functions easily even by one hand.
- / Displayed turtle speed function applied to move slowly and helps to stack goods in narrow spaces.
- / Optimized designing structure to offer a good visibility and easy entrance of the pallet.
- / The compact body and big rounded design provide an ideal operation in limited space, and the wedge designed chassis greatly increases the passing ability.
- / Customer can choose different width of outside fork and length of forks to fit variable pallet.

Standard Specification

- / Horn
- / AC drive motor
- / PU drive wheel
- / Pedal and handrail
- / Tandem load wheels
- / 1150mm fork length
- / CURTIS AC controller
- / Hydraulic power unit
- / 540mm outside fork width
- / Electronic lifting limitation
- / Emergency disconnect switch
- / Multi-function battery indicator
- / CAN-bus system multi-function tiller
- / Electric steering (stand on pallet)

Options

- / Different length of forks
- / Different width of outside fork
- / Cold store protection (-30 C)
- / Pedestrian:210Ah~240Ah
- / Stand-on:240Ah~340Ah
- / Guide roller of pallet
- / Load backrest
- / Automatic charger